

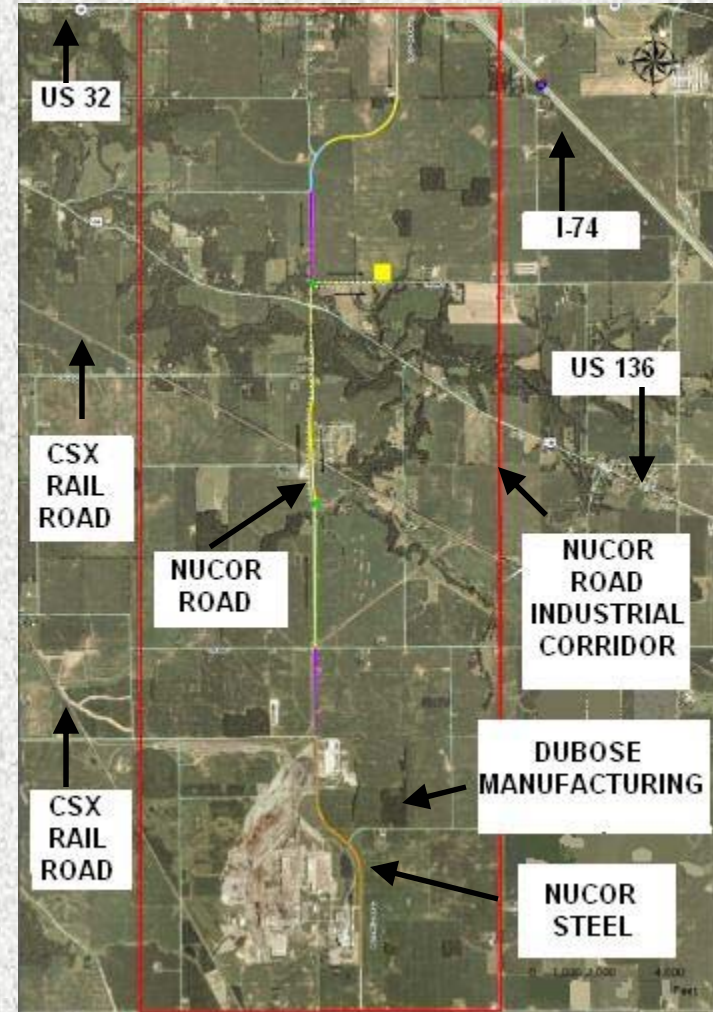


Nucor Road Industrial Corridor

Located strategically on Interstate I-74 and US 32, this industrial corridor features centrally located transportation infrastructure to include Interstate and rail access. The corridor is home to several high tech steel related industries such as Nucor Steel, Heidtman Steel, DuBose Manufacturing, Performance Master, and Whitesville Mill. These companies are known worldwide for providing quality employment opportunities and industry innovations.

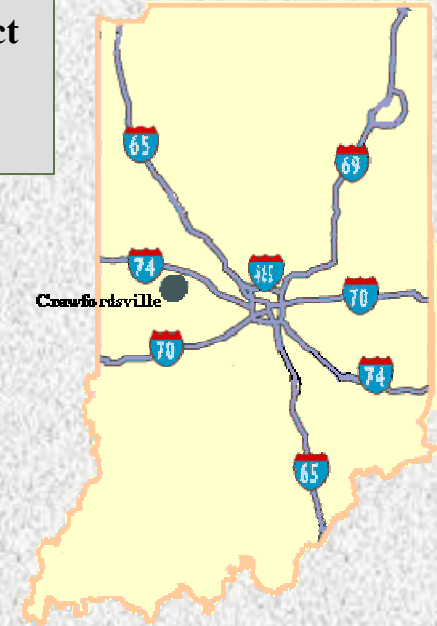
For More Information on Employment in Montgomery County Please visit:

www.HoosierEmployer.com



“Corridor Highlights”

- Various Parcel Sizes Available
- Excellent Utilities
- Great Transportation
Interstate, Rail, & Crawfordsville Airport
- Regional Sewer District
- Workforce Ready to Compete in Global Economy



Contact Information

Bill Henderson, Executive
Director

309 N Green St.
Crawfordsville, IN 47933

Phone: 765-362-6851

Fax: 765-362-6900

Website:
www.HoosierEmployer.com

Email:
BillHenderson@MCEdinc.com